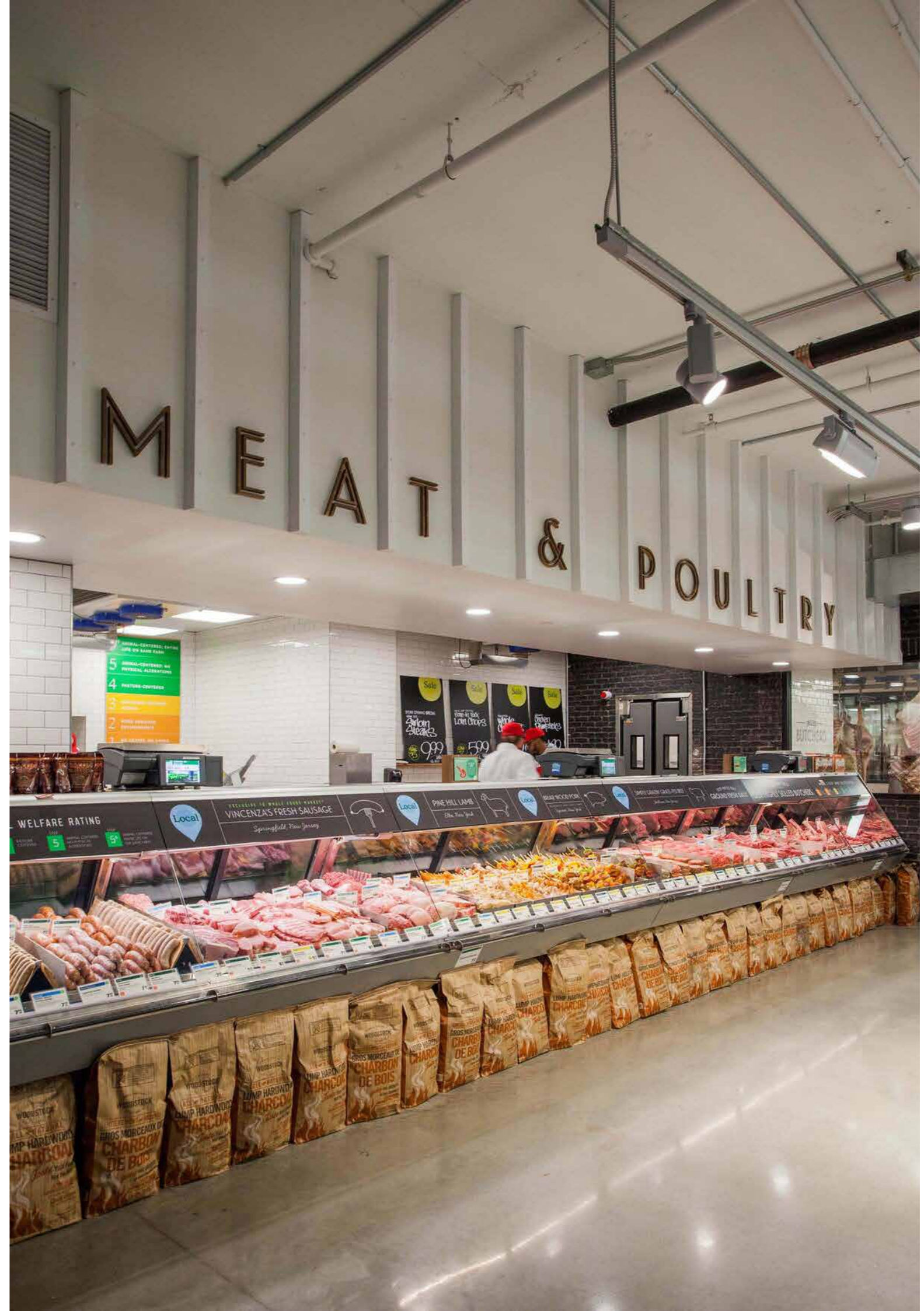


Cutting edge solutions for butcheries





Presented in the pages ahead is a world class range of equipment from Trufrost and Butler for butcheries, meat and seafood stores. Built to the highest standards of hygiene, they are reliable and perform tirelessly to enable your butchery running smoothly.





CONTENTS

Meat Slicers	4
Meat Mincers	6
Bone Saw Machines	8
Sausage Fillers	9
Hamburger Patty Press	10
Bowl Cutters	12
Serve Over Counters	14
Self Serve Counters	16
Fish Counters	18
Traditional Island Freezers	21
Visi Coolers & Freezers - Premia Series	22
Traditional Visi Freezers	23
Flake Ice Machines	27
Glass Top Freezers and Chest Freezers	30
Professional Refrigeration Products	37
Coldrooms	38
Flat Packed Stainless Steel Furniture	39

Meat Slicers

These semi-automatic meat slicers from Butler come with high quality bearing design that allows for a smooth operation. The handle is safe and convenient to use when in operation. They are easy to clean, are durable and have a firm-grip base.



SL 250 ES-10



Technical Specifications

Model	Power	Dimensions W x D x H (mm)	Blade diameter	Cutting thickness	Net Weight
SL 250 ES-10	320W	390 x 470 x 380	250mm/10"	0~10 mm	15.5 kgs

Voltage: 220-240V/50Hz

Specifications are subject to change without prior notice





TC-8



Meat Mincers

These durable meat mincers from Butler come with an all stainless steel construction. They are easy to operate & clean; confirm to international sanitation standards. All models are loaded with an easy to replace, circular orifice knife and cross-blades.

Technical Specifications

Model	Power	Dimensions W x D x H (mm)	Capacity	Net Weight
TC-8	350W	370 x 230 x 470	80 kgs /h	20 kgs

Voltage: 220-240V/50Hz Specifications are subject to change without prior notice





Bone Saw Machines

The Bone Saws from Butler are designed to cut bones, frozen meat, fish etc., and are easy to operate & clean. J-210 is a countertop model that uses high quality stainless steel saw blades to ensure smooth cutting. So is the working table and parts that come in touch with the food which confirms to international sanitation standards. It comes with a built-in waterproof safety device that automatically stops the machine if the outer cover is open.



J-210

Technical Specifications

Model	Power	Dimensions WxDxH (mm)	Working Table Size WxDxH (mm)	Blade Size WxDxH (mm)	Rotational Speed	Cutting Height	Cutting Thickness	Net weight
J-210	650W	520x470x820	500x380	1650x16x0.5	1420 RPM	0~180mm	5~155mm	40Kg

Voltage: 220-240V/50Hz

Specifications are subject to change without prior notice due to continuous product development



Four stainless steel stuffing funnel sizes (16, 22, 30, and 38mm)



TV-7L

Sausage Fillers

These vertical Sausage Fillers from Butler are designed to be used in restaurant kitchens and for food processing and are easy to operate & clean. The body is made in stainless steel and confirms to international sanitation standards. Strong gear and a double-thick stuffing rack, makes them powerful and durable. They come with two speed regulations for increased efficiency and convenience.

Technical Specifications

Model	Dimensions W x D x H (mm)	Capacity	Net Weight
TV-7L	850 x 320 x 290	7L	16 kgs

Voltage: 220-240V/50Hz
 Specifications are subject to change without prior notice



Hamburger Patty Press

The Butler Manual Hamburger Patty Press has a simple, functional design. It is designed to be used in restaurant kitchens and for food processing. The whole body is made of aluminium and the patty bowl is made in stainless steel confirming to international sanitation standards. The platform is firm and durable making the patty press easy to operate and clean.



SL-H100

Technical Specifications

Model	Patty Diameter	Dimensions W x D x H (mm)	Net Weight
SL-H100	110mm	230 x 165 x 280	4.6 kgs

Voltage: 220-240V/50Hz

Specifications are subject to change without prior notice



Bowl Cutters

The Bowl Cutters from Butler are designed to cut and chop fresh meat as well as vegetables into pieces within minutes, whilst allowing them to retain their nutrition and taste. The blade and 6 litre food bowl are made in high quality stainless steel that confirms to international sanitation standards. The food plate is easy to remove, clean and install. The high speed, S shaped blade enhances efficiency and saves labour and time. The machine is designed to stop when the bowl cover is open. It has overload and overheat protection for increased safety and a waterproof level of IPX4.



SL-400



Technical Specifications

Model	Power	Dimensions W x D x H (mm)	Blade Rotational Speed	Plate Rotational Speed	Plate Diameter	Net Weight
SL-400	400W	670x480x410	1460 RPM	20 RPM	400mm	36 kgs

Voltage: 220-240V/50Hz

Specifications are subject to change without prior notice

Serve Over & Self Service Counters





SOC 2590

Serve Over Counters - Plug-in

Trufrost presents stylish serve over counters for display of a variety of foodstuff including delicatessens, dairy products, sausages, meat and poultry that ensure maximum visibility in a pleasing manner. The front glass can be lifted for cleaning. They also come with an additional refrigerated storage underneath which can be accessed through specially provisioned small door/s at the rear.



Openable front glass



Rear storage



Key Features

- ◆ Stylish display for dairy products, sausages, packaged meats & poultry and delicatessens
- ◆ High performance compressor
- ◆ Easy to clean, stainless steel platform on the top rear portion
- ◆ Ensures maximum visibility to the products presented
- ◆ LED lighting
- ◆ Rear storage with 1/2 doors in different models





Self Serve Counters

These refrigerated self-service counters from Trufrost are designed to store and display deli & pastry products, sausages, packaged meats & dairy products and delicatessens. Thanks to a contemporary and functional design, they respond effectively to the multiple demands of retailers.



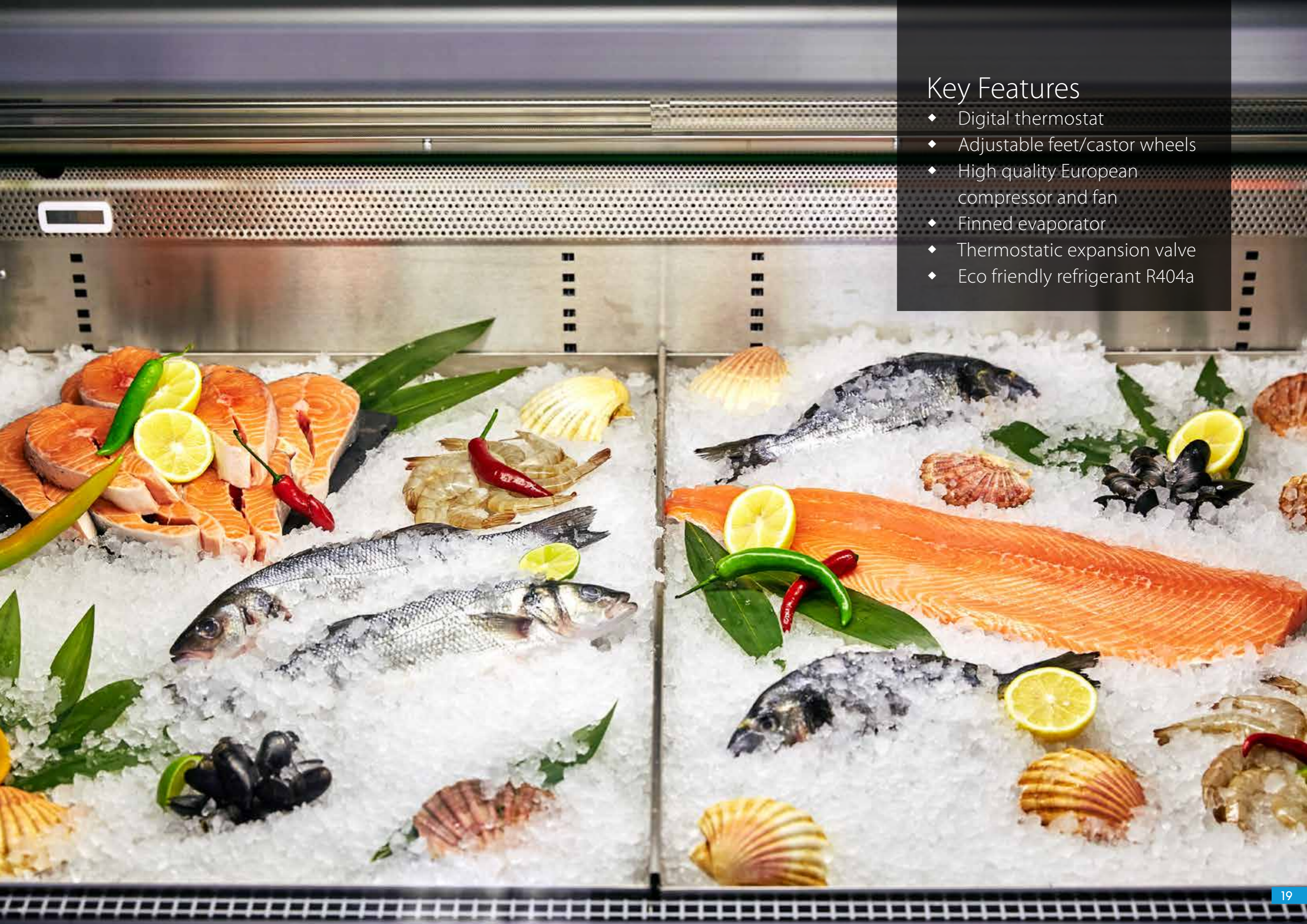
Key Features

- ◆ High performance compressor
- ◆ East to clean, stainless steel platform on the top rear portion
- ◆ Ensures maximum visibility to the products presented
- ◆ LED lighting



Stainless Steel Fish Counters

Built on a platform of stainless steel AISI 304, Trufrost fish counters are perfect for displaying fresh fish. They are designed for providing optimal chilling during display only, not as a storage vessel for continuous use. All contents should be removed and placed into refrigerated storage during out hours – the counter being clear for cleaning and sanitising prior to restocking, the next day.



Key Features

- ◆ Digital thermostat
- ◆ Adjustable feet/castor wheels
- ◆ High quality European compressor and fan
- ◆ Finned evaporator
- ◆ Thermostatic expansion valve
- ◆ Eco friendly refrigerant R404a

Technical Specifications - Serve Over & Self Serve Counters



Product	Model	Dimensions wxdxh (in mm)	Temperature range at 25 °C, 60%RH	Power	Refrigerant	Rated Current	Shelves	No. of Rear Doors
Serve Over Counters	SOC-1590	1590x918x1230	+2°C ~ +8°C	500 W	R404a	6.0A	1	1
Serve Over Counters	SOC-2590	2590x918x1230	+2°C ~ +8°C	732 W	R404a	6.0A	1	2
Self Serve Counters	SSC-1350	1350x1100x910	-2°C ~ +2°C	620 W	R404a	3.8A	-	-
Self Serve Counters	SSC-1980	1980x1100x910	-2°C ~ +2°C	676 W	R404a	4.0A	-	-
Stainless Steel Fish Counters	SSFC-1930	1930x1130x900	-5°C ~ 0°C	600W	R404a	6.0A	-	-

Electricals: 220V/50Hz./Single Phase

Specifications are subject to change without prior notice due to continuous product development



Traditional Island Freezers

Trufrost Island Freezers are a retailer's delight and come with fully loaded baskets for easy access & convenient segregation of frozen food. IL 450 and IL 660 come with 4 baskets each.



Technical Specifications



Specification	Island Freezers	
	IL-450	IL-660
Gross Volume (Litres)	450	660
w*d*h (inches)	70x29x33	74x32x34
Temperature Range	≤-18°C	≤-18°C
Power (W)	355	380
Refrigerent	R290	R134a
Lock	Yes	Yes
Defrost	Manual	Manual
No. of Lids / Doors	2	2
No. of Baskets	4	4
Wheels / Castors	Yes	Yes

Electricals: 220V/50Hz/1 Phase

Specifications are subject to change without prior notice due to continuous product development

Visi Coolers & Freezers - Premia Series

Trufrost Premia Series are plug-in type 2 & 3 glass door upright Coolers & Freezers. They provide an ultra rich and pleasing 'top to bottom' view of the displayed foodstuff and packaged food, whether frozen or chilled. They are extremely reliable and work on a ventilated cooling system. The Freezers come with 2 strong and top mounted compressors with automatic defrost. The cabinet interiors of both - the Freezers and Chillers come with LED lights to enhance the quality of display.



VC-1250 Premia



VC-1800 Premia

Visi Coolers



VF-1250 Premia



VF-1800 Premia

Visi Freezer

Technical Specifications



Model	Volume (L)	Door type	Shelves	Power	Dimensions (wxdxh) mm	Temperature range	Refrigerant	No. of Compressors
VC-1250 Premia	1250	2 Hinge	10	412W	1260x750x2092	+1°C ~ +10°C	R134a	1
VC-1800 Premia	1800	3 Hinge	15	675W	1880x750x2092	+1°C ~ +10°C	R134a	1
VF-1250 Premia	1250	2 Hinge	10	1472W	1260x750x2092	-18°C ~ -22°C	R404a	2
VF-1800 Premia	1800	3 Hinge	15	1850W	1880x750x2092	-18°C ~ -22°C	R404a	2

Electricals: 220V/50Hz./Single Phase

Specifications are subject to change without prior notice due to continuous product development

Key Features

- Forced air circulation
- Adjustable shelves
- Interior LED lights
- Universal wheels, front with brake
- Double pane glass including Low E in Visi Coolers
- Triple pane glass with heated film in Visi Freezers
- Self Closing doors
- Self evaporating drip tray
- Low-maintenance condenser
- Standard ambient for Visi Coolers +35°C at 65%RH and for Visi Freezers +25°C at 60%RH
- Auto-defrost in Visi Freezers

Traditional Visi Freezers

Trufrost upright visi freezers are known for their reliability and provide a pleasing view of the displayed foodstuff and packaged frozen food. The VF-400 and VF-1000 are among our fast selling models. They have a ventilated cooling system with automatic defrost and are fitted with LED lights to enhance the quality of display.



VF-400



VF-1000

New upgraded model
with 2 compressors



Slimline Visi Freezers

The slimline visi freezers from Trufrost are also a piece of art combined with efficient freezing that will magnetise you towards it. They provide an exceptional view of the displayed foodstuff and packaged frozen food. They come with a ventilated cooling system and automatic defrost.

Key Features

- ◆ Forced air circulation
- ◆ w-maintenance condenser
- ◆ Interior LED lights
- ◆ Self closing door
- ◆ Self evaporating drip tray



SVF-300



Table Top Visi Freezers

This table top visi freezer from Trufrost is a work of art combined with efficient freezing. It provides an exceptional view of the displayed foodstuff and packaged frozen food. Available in an elegant combination of champagne and white colour.



VF-100

Key Features

- Triple pane glass door with heater
- White precoated galvanised steel inner liner
- Mechanical temperature control
- Integrated ABS door frame
- Interior LED light on top
- Illuminated canopy
- Self-closing door
- 4 adjustable feet

Technical Specifications - Visi Freezers



Specification	Gross Volume (Litres)	w x d x h (inches)	Temperature Range	Power (w)	Lock	Defrost	No. of Lids / Doors	No. of shelves	Interior Light	Wheels / Castors	No. of Compressors	Refrigerant
VF-1000NF	950	48 x 28 x 78	-18°C ~ -22°C	1250	Yes	Automatic	2	10	Yes / 2LEDs	Yes	2	R404a
VF-400	400	26 x 28 x 78	-18°C ~ -22°C	570	Yes	Automatic	1	5	Yes / 2LEDs	Yes	1	R404a
SVF-300	200	17 x 21 x 73	-18°C	225	No	Automatic	1	5	Yes / 1LED	No	1	R290a
VF-100	100	24 x 21 x 33	≤-22°C	140	No	Yes	1	2	LED light	Yes,4	1	R290a

Electricals: 220V/50Hz/1 Phase

Specifications are subject to change without prior notice due to continuous product development



Flake Ice

Flake ice is granular type of ice, perfect for display of fresh fish in supermarkets or by meat/fish shops for moisturising and cooling the displayed foodstuff to perfection.



Flake Ice Machines

Trufrost Flake Machines with self contained bins come in production capacities ranging from 20 - 200kg per day and the Modular Ice Flake Machines are available in production capacities of 500 & 1000 kg per day. They are known for their low water and energy consumption.



IF-20



IF-50, IF-70



IF-120, IF-200



IF-500
on ISB 125 Bin



IF-1000
on ISB 350 Bin



Technical Specifications - Flake Ice Machines



Model	Rated Capacity / 24 hrs.*	Ice Storage Capacity	Cube Shape / Size	Refrigerant	Power (w)	Dimensions wxdxh (mm)	Compatible Storage Bin
IF 20	20 kgs.	10 kgs.	Granular Flakes	R 134a	280	330*470*605	-
IF 50	50 kgs.	15 kgs.	Granular Flakes	R 134a	380	400*540*700	-
IF 70	70 kgs.	25 kgs.	Granular Flakes	R 134a	460	400*510*845	-
IF 120	120 kgs.	40 kgs.	Granular Flakes	R 134a	550	500*611*950	-
IF 200	200 kgs.	60 kg	Granular Flakes	R134a	1040	650*740*1100	-
IF 500	500 kgs.	125 kg	Granular Flakes	R404a	2000	760*830*1950	ISB 125
IF 1000	1000 kgs.	315 kg	Granular Flakes	R404a	4000	1227*973*2195	ISB 350

* At 10°C incoming water and 10°C air temperature Electricals: 220V/50Hz./Single Phase

Height & width for IF 500/1000 is with the suggested storage bin

Specifications are subject to change without prior notice due to continuous product development



ISB 125



ISB 350

Specifications - Storage Bins

Model	Ice Storage Capacity	Dimensions wxdxh (mm)	Compatible with
ISB-125	125 kgs.	760*830*1150	IF-500
ISB-350	350 kgs.	1227*973*1255	IF-1000



Glass Top Freezers - Deluxe series

These Trufrost Flat Glass Freezers add a new dimension to the routine glass tops available in the market. They come with LED light to enhance the product display - feature that is a retailer's delight. GT 440 Dlx and GT 650 Dlx come with 4 and 6 fully loaded baskets respectively (2 of which are QDI baskets), for easy access & convenient segregation of the displayed items. They come with an extra thick 75 mm insulation and an elegant aluminium door frame that contrasts well with the white freezer body.



Models available

- GT-440 Dlx (with 4 baskets)
- GT-650 Dlx (with 6 baskets)

Introducing Glass Top Freezers that **stand out**



LED Light



Full basket



Prepainted aluminum plate

Aluminium alloy door frame



Double row Casters

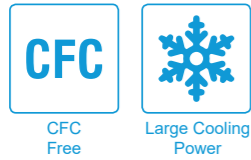


Temperature display

Key Features

- New style flat sliding glass lid
- Fully Automatic operation
- 75 mm thickness insulation
- Exterior white finish
- Aluminum door frame
- Adjustable thermostat
- Main power indicator
- Defrost water drain hole
- Full basket as standard
- Interior LED light as standard
- Four caster wheels
- Environmentally friendly





Flat Glass Top Freezers

Trufrost Flat Glass Freezers are a retailer's delight and come with fully loaded baskets for easy access & convenient segregation of frozen food.



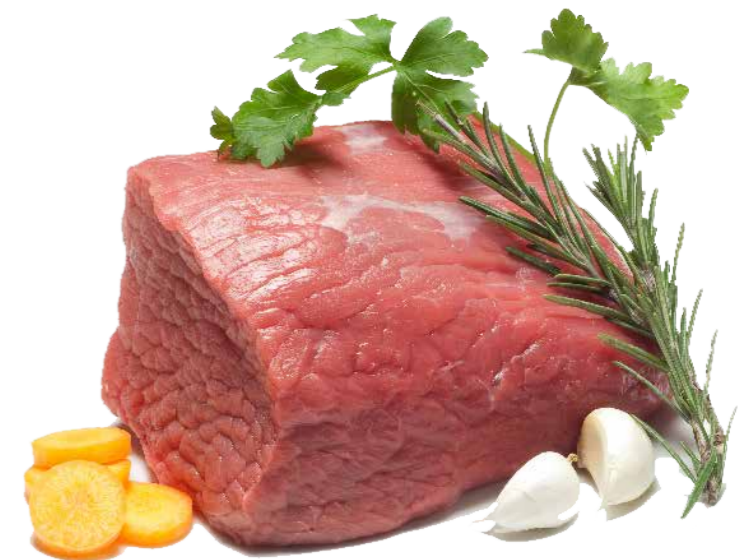
Models available

- GT-100 (with 1 basket)
- GT-200 (with 1 basket)



Models available

- GT-310 (with 3 baskets)
- GT-350 (with 4 baskets)
- GT-410 (with 4 baskets)
- GT-450 (with 4 baskets)





Curved Glass Top Freezers

Trufrost Curved Glass Freezers are a retailer's delight. GTC 330 and 400 come with 3 baskets and GTC 625 has 9 baskets with 18 separators for easy access & convenient segregation of frozen food.



GTC 330 (with 3 baskets)
GTC 400 (with 3 baskets)



GTC 625 (with 9 baskets with 18 Separators)

Technical Specifications



Specification	Flat Glass Top Freezers				Flat Glass Top Freezers				Curved Glass Top Freezers		
	GT-440 DLX	GT-650 DLX	GT-100	GT-200	GT-310	GT-350	GT-410	GT-450	GTC-330	GTC-400	GTC-625
Gross Volume (Litres)	400	600	100	200	310	350	410	450	330	400	610
w*d*h (inches)	50x27x34	71x27x34	23x21x33	37x21x33	39x27x33	43x28x33	49x27x33	52x28x33	41x26x35	49x26x35	71x27x34
Temperature Range	≤-18°C	≤-18°C	≤-20°C	≤-20°C	≤-20°C	≤-20°C	≤-20°C	≤-20°C	≤-20°C	≤-20°C	≤-20°C
Power (W)	210	252	133	210	300	325	360	375	215	325	240
Refrigerent	R290	R290	R134a	R134a	R134a	R134a	R134a	R134a	R134a	R134a	R290
Lock	Yes	Yes	Yes	Yes	Yes	Yes	Yes	Yes	Yes	Yes	Yes
Defrost	Manual	Manual	Manual	Manual	Manual	Manual	Manual	Manual	Manual	Manual	Manual
No. of Lids / Doors	2	2	2	2	2	2	2	2	2	2	2
No. of Baskets	4 (2 standard + 2 QDI)	6 (4 standard + 2 QDI)	1	1	3	4	4	4	3	3	9
Wheels / Castors	4	6	Yes	Yes	Yes	Yes	Yes	Yes	Yes	Yes	Yes

Electricals: 220V/50Hz/1 Phase Specifications are subject to change without prior notice due to continuous product development





CFC Free



Large Cooling Power

Conventional 2-in-1 Convertible Freezers / Chillers

Trufrost 2-in-1 hard top chest freezers conveniently double up as chillers at the turn of a knob and are available in a wide variety of sizes ranging from 100 to 820 litres to suit every conceivable need. You can also choose between single, double and three lid variants.



Single Lid Models

- CF-110
- CF-220
- CF-300



Double Lid Models

- CF-350 2D
- CF-400 2D (not convertible into chiller)
- CF-440 2D
- CF-500 2D
- CF-550 2D
- CF-700 2D



Three Lid Models

- CF-820 3D

Technical Specifications - Chest Freezers



Specification	Chest Freezers									
	CF-110	CF-220	CF-300	CF-350-2D	CF-400-2D	CF-440-2D	CF-500-2D	CF-550-2D	CF-700-2D	CF-820-3D
Gross Volume (Litres)	100	200	276	345	400	400	470	550	680	820
w*d*h (mm)	559*554*845	860*580*835	1104*554*845	1160*640*835	1304*670*830	1256*710*880	1523*725*842	1683*710*880	1843*725*842	2415*725*842
Temperature Range	+2°C -20°C	+2°C -20°C	+2°C -20°C	+2°C -20°C	≤-20°C	+2°C -20°C	+2°C -20°C	+2°C -20°C	+2°C -20°C	+2°C -20°C
Power (W)	87	120	115	325	270	270	253	325	305	355
Refrigerent	R 134a	R 134a	R 134a	R 134a	R 134a	R 290	R 134a	R 290	R 134a	R 134a
Lock	Yes	Yes	Yes	Yes	Yes	Yes	Yes	Yes	Yes	Yes
Defrost	Manual	Manual	Manual	Manual	Manual	Manual	Manual	Manual	Manual	Manual
No. of Lids / Doors	1	1	1	2	2	2	2	2	2	3
No. of Baskets	1	1	1	1	2	2	2	2	2	2
Wheels / Castors	Yes	Yes	Yes	Yes	Yes	Yes	Yes	Yes	Yes	Yes

Electricals: 220V/50Hz/1 Phase

Specifications are subject to change without prior notice due to continuous product development



Tireless performers

Refrigerated Reach in Cabinets

Trufrost Reach-Ins are available as Chillers or Freezers and come with 1, 2 or 4 door options. They come in 600 and 1200 litre capacities. Being vertical front door opening machines, they help save on precious space.



Refrigerated Work Tables

Trufrost refrigerated work tables, mounted on heavy duty lockable castors, combine storage and preparation thereby enhancing the effectiveness of the users. These are available as Chillers or Freezers and come with 2 and 3 door options.



Technical Specifications



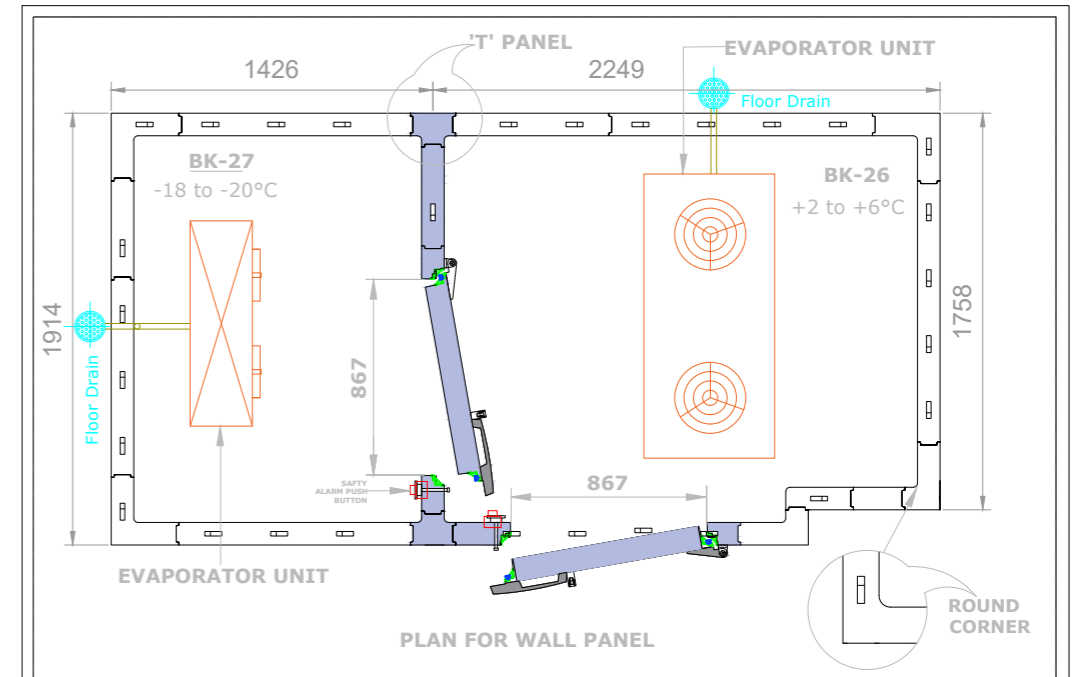
Product	Model	Cooling System	Product Dimensions W*D*H (mm)	Volume (Litres)	Product Weight (Kg)	No. of Doors / Drawers	No. of Shelves	Temperature Range (°C)	Refrigerant	Input Power (W)
Reach In Refrigerators	G 600 TN	Ventilated	680*710*2010	600	83	1	5	2 ~ +10	R 134a	305
	G 600 TNM	Ventilated	680*710*2010	600	115	2	3	2~+10	R134a	220
	G 1200 TNM	Ventilated	1340*710*2010	1200	152	4	6	2~+10	R134a	465
Reach In Freezers	G 600 BTM	Ventilated	680*710*2010	600	126	2	3	-22~-18	R404A	615
	G 1200 BTM	Ventilated	1340*710*2010	1200	161	4	6	-22~-18	R404A	580
Undercounter Refrigerators	G 2100 TN	Ventilated	1360*600*850	228	83	2	2	2~+10	R134a	240
	G 3100 TN	Ventilated	1795*600*850	339	102	3	3	2~+10	R134a	230
	S 901	Static	900*700*850	240	69	2	2	+2~+10	R134a	180
Undercounter Freezers	G 2100 BT	Ventilated	1360*600*850	228	92	2	2	-22~-18	R404A	615
	G 3100 BT	Ventilated	1795*600*850	339	114	3	3	-22~-18	R404A	615

Electricals: 220V/50Hz/1 Phase Specifications are subject to change without prior notice due to continuous product development
 # Please refer to information given next to the product picture.

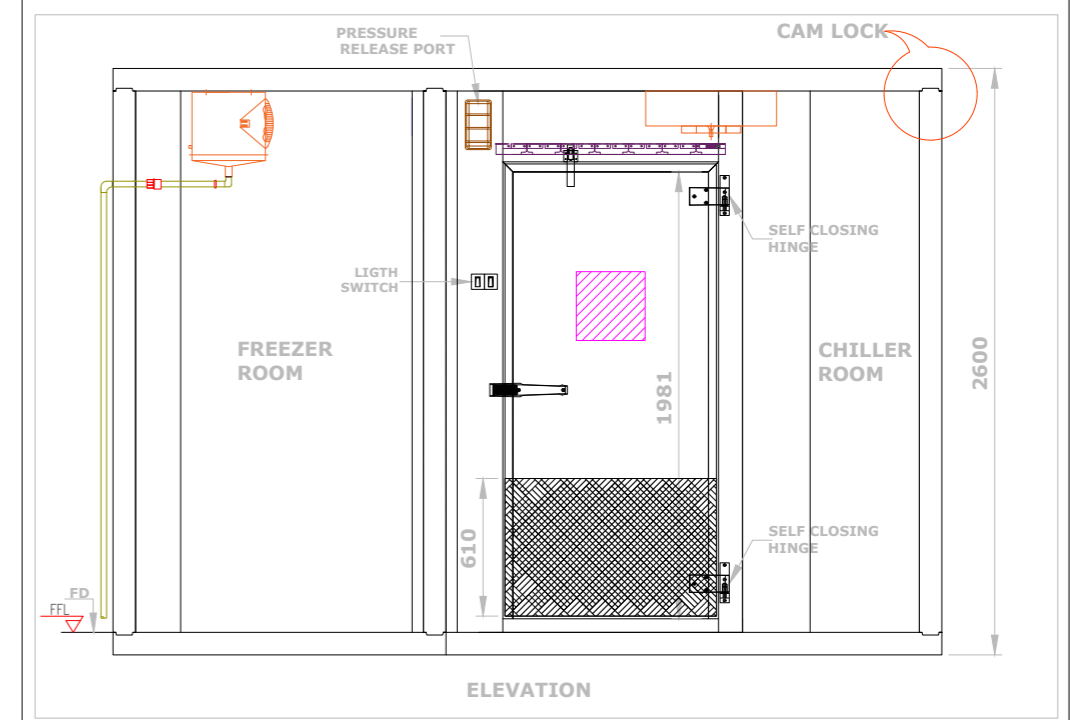
Coldrooms

Team Trufrost has an expertise in design, supply, installation and after-service for your coldroom needs. Having worked extensively in the cold chain industry for over 3 decades, we've devoted ourselves to creating products and solutions that are extremely dependable. We specialize in preservation & storage of bakery ingredients and products.

For technical specifications please refer to our separate catalogues on [coldrooms](#).



COMBO COLD ROOMS FOR BAKERY KITCHEN



Flat Packed Stainless Steel Furniture

The knocked down stainless steel furniture range from Butler perfectly complements its cooking and food preparation equipment. Built in solid 0.8mm stainless steel, it is easy to install and aims to comprehensively address the back-end equipment needs of supermarkets and food retail stores.





Work Tables with Splash Back

- ◆ Flat packed
- ◆ Easy to install
- ◆ Four side table support for stability

Model	Description	Dimensions (WXDXH) mm
WT.1200SB	Work Table with Splash Back - 1200 mm	1200*700*850+100

Specifications are subject to change without prior notice



Work Tables

- ◆ Flat packed
- ◆ Easy to install
- ◆ Four side table support for stability

Model	Description	Dimensions (WXDXH) mm
WT.1200	Work Table - 1200 mm	1200*700*850

Specifications are subject to change without prior notice



Stands with 4 shelves

- ◆ Flat packed
- ◆ Easy to install
- ◆ Holes for air ventilation
- ◆ Each shelf designed to accommodate a load 80 kg

Model	Description	Dimensions (WXDXH) mm
4S.1000	Stand with 4 shelves - 1000mm	1000*500*1800
4S.1200	Stand with 4 shelves - 1200mm	1200*500*1800
4S.1400	Stand with 4 shelves - 1400mm	1400*500*1800
4S.1500	Stand with 4 shelves - 1500mm	1500*500*1800
4S.1800	Stand with 4 shelves - 1800mm	1800*500*1800

Specifications are subject to change without prior notice



Single Layer Wall Shelves

- ◆ Flat packed
- ◆ Easy to install
- ◆ Adjustable shelf height

Model	Description	Dimensions (WXDXH) mm
1S.1000	Single Layer Wall Shelf -1000mm	1000*300*600
1S.1200	Single Layer Wall Shelf -1200mm	1200*300*600

Specifications are subject to change without prior notice

Serving happiness





www.kanteenindia.com

www.trufrost.com

KANTEEN INDIA EQUIPMENTS CO.

**CB-59, Sec-1, Salt Lake City, Near Tank No. 2,
Beside IndusInd Bank, Kolkata 700064, WB, India
M: +91-8100-777-000 | E: sales@kanteenindia.com
www.kanteenindia.com | www.facebook.com/kanteenindia**